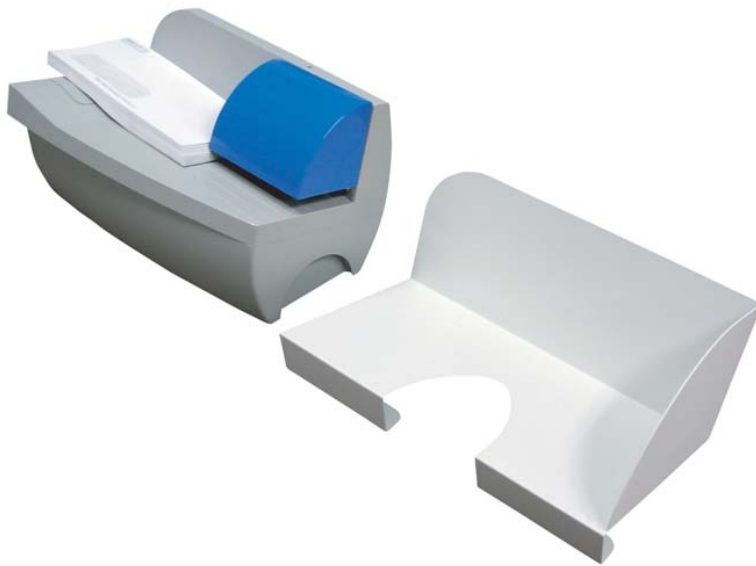


# Automatic Letter Opener

Model 3010



## **Chadless**

No cuttings to get in the way of feeding or opening

## **Efficient**

Opens mixed sizes of envelopes automatically

## **No Waste Disposal**

As the opener does not remove any part of the envelope, there is no waste to worry about making the operation clean, easy, and trouble free.

## **High Productivity**

With speeds up to 9,000 envelopes per hour, this machine opens your daily mail quickly.

## **Low Cost**

A machine that pays for itself even for the small user

## **Easy to Operate**

## **Specifications:**

**Length:** 330mm (13in) **Depth:** 215mm (9in) **Height:** 180mm (7in) **Weight:** 4.4kg (10lbs)

**Power:** 120VAC or 230VAC

**Envelope Size:** All sizes and types. Maximum Thickness 6mm (1/4")

**Theoretical speed:** 9,000 envelopes per hour **Production speed:** 3,000 envelopes per hour  
(If you have a trained octopus as an operator, revert to the theoretical speed)

# POSTMARK

## **POSTMARK INC**

**PHONE** | 805.594.1454  
**FAX** | 805.594.1455

3197 DUNCAN LANE #A  
SAN LUIS OBISPO, CA 93401  
UNITED STATES OF AMERICA

[WWW.POSTMARK-USA.COM](http://WWW.POSTMARK-USA.COM)

## **POSTMARK APS**

**PHONE** | +45 66 179833  
**FAX** | +45 65 910189

ENIGHEDSVEJ 21  
5000 ODENSE C  
DENMARK

[WWW.POSTMARK.DK](http://WWW.POSTMARK.DK)