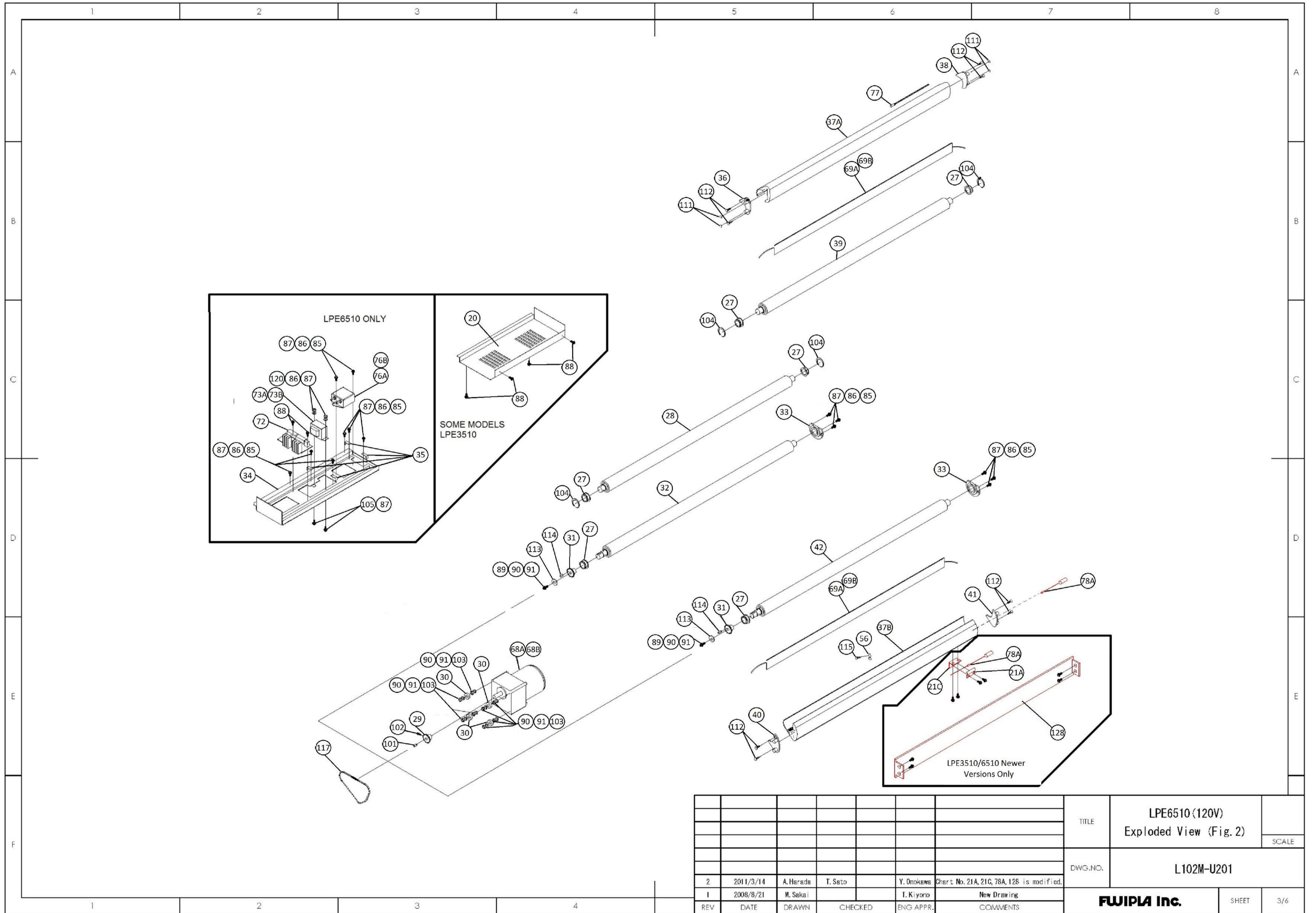
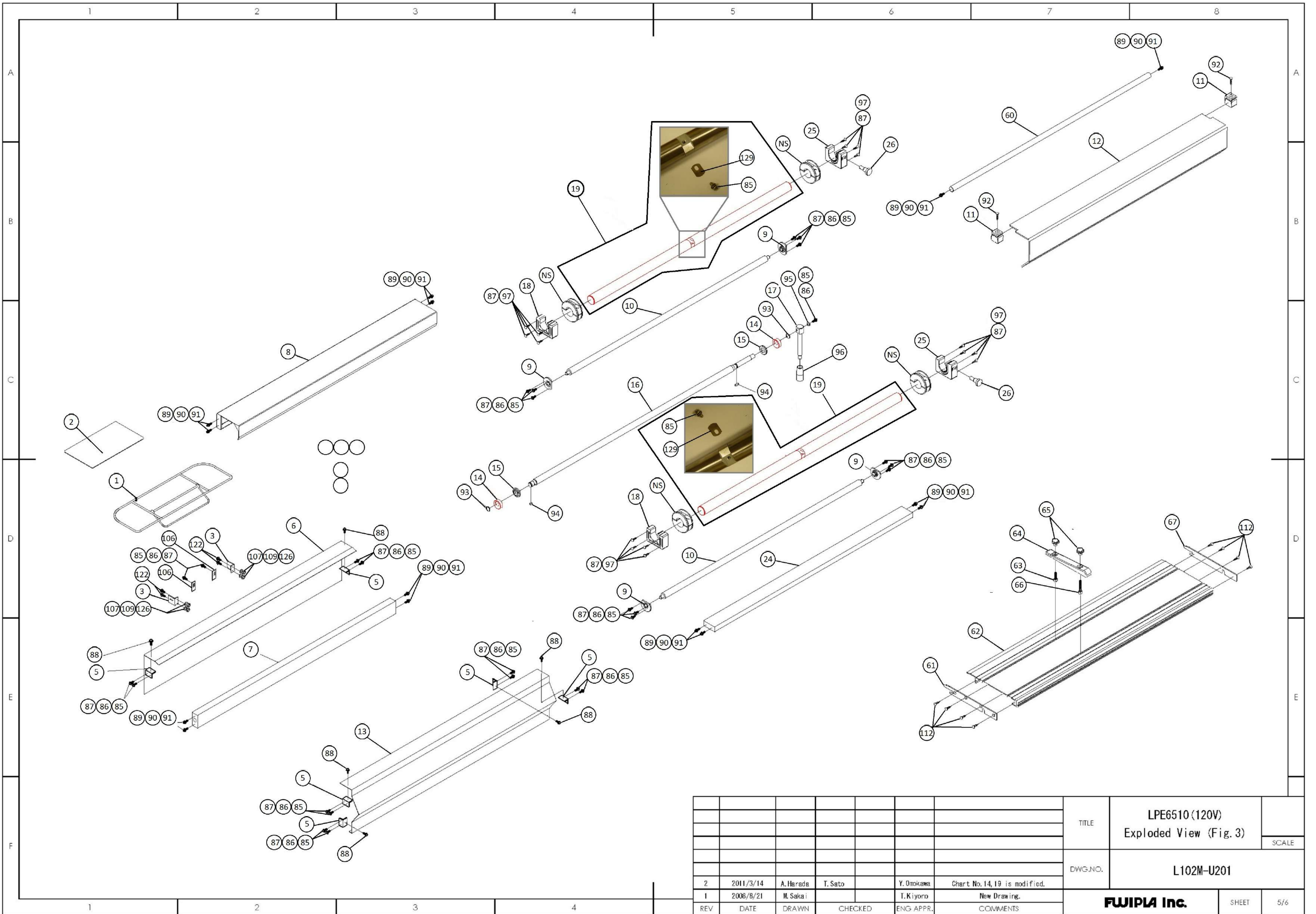


						TITLE	LPE6510 (120V) Exploded View (Fig. 1)		SCALE
						DWG. NO.	L102M-U201		
2	2011/3/14	A. Harada	T. Sato	Y. Omokawa	Chart No. 44, 45, 46, 127 is modified.				
1	2008/8/21	M. Sakai		T. Kiyono	New Drawing.				
REV	DATE	DRAWN	CHECKED	ENG. APPR.	COMMENTS				
						<b>FUJIPA Inc.</b>		SHEET	1/8



							TITLE	LPE6510 (120V) Exploded View (Fig. 2)	SCALE
							DWG. NO.	L102M-U201	
2	2011/3/14	A. Harada	T. Sato		Y. Omokawa	Chart No. 21A, 21C, 78A, 128 is modified.			
1	2008/8/21	M. Sakai			T. Kiyono	New Drawing			
REV	DATE	DRAWN	CHECKED	ENG APPR.	COMMENTS		<b>FUJIPA Inc.</b>	SHEET	3/6



						TITLE	LPE6510 (120V) Exploded View (Fig. 3)	SCALE
						DWG. NO.	L102M-U201	
2	2011/3/14	A. Harada	T. Sato	Y. Omokawa	Chart No. 14, 19 is modified.			
1	2008/8/21	M. Sakai		T. Kiyono	New Drawing.			
REV	DATE	DRAWN	CHECKED	ENG APPR.	COMMENTS	<b>FUJIPA Inc.</b>		SHEET 5/6



Exploded Views Drawing #	Order Code	LPE6510 (25") and LPE3510 (13") Parts. Be sure to check the serial number of the machine being repaired.
	LPE6510BOX	Carton for laminator; LPE3510: N/A
1	964201	Rear Tray
2	964202	Film Setting Board Fujipla- REPLACED BY CORONADO BINDING BOARD
3	964203	Rear Tray Bracket
5	964205	Support Bracket
6	964206	Rear Cover (LPE6510)
6	963206	Rear Cover (LPE3510)
7	964207	Stay (Back Lower) (LPE6510)
7	963207	Stay (Back Lower) (LPE3510)
8	964208	Pull Roll Safety Cover (LPE6510)
8	963208	Pull Roll Safety Cover (LPE3510)
9	964209	Guide Roller Bearing
10	964210	Guide Roller (LPE6510)
10	963210	Guide Roller (LPE3510)
11	964211	Safety Cover Connection Fitting
12	964212	Safety Cover (LPE6510)
12	963212	Safety Cover (LPE3510)
13	964213	Mid Frame (LPE6510)
13	963213	Mid Frame (LPE3510)
14	964214	Cam (LPE6510: Prior to S/N 6001119; LPE3510)
14	964283	Cam (LPE6510: After S/N 6001119)
15	964215	Roll Up Shaft Bearing
16	964216	Roll Up Shaft (LPE6510)
16	963216	Roll Up Shaft (LPE3510)
17	964217	Handle
18	964218	Mandrel Bracket (Left)
19	964219	Mandrel Ass'y (plastic caps) (LPE6510: Prior to S/N 6001119)
19	964284	Mandrel Ass'y (metal caps) (LPE6510: After S/N 6001119)
19	963220	Mandrel Ass'y (plastic caps) (LPE3510)
20	964220	Motor Chassis
21A	964221	Holding Plate for Temperature Fuse (LPE6510: Prior to S/N 6001119; LPE3510)
21A	964280	Holding Plate for Temperature Fuse (Small) (LPE6510: After S/N 6001119)
21C	964281	Holding Plate for Temperature Fuse (Large) (LPE6510: After S/N 6001119)
22	964223	Motor Capacitor Bracket
23	964224	Fuse Holder Bracket
24	964225	Stay (Front Lower) (LPE6510)
24	963264	Stay (Front Lower) (LPE3510)
25	964226	Mandrel Bracket (Right)
26	964227	Tension Adjustment Handle
27	964228	Bearing Ass'y (1)
28	964229	Pull Roller (Upper) (LPE6510)
28	963228	Pull Roller (Upper) (LPE3510)
29	964230	Motor Sprocket
30	964231	Motor Washer
31	964232	Roller Sprocket
32	964233	Pull Roller (Lower) (LPE6510)
32	963232	Pull Roller (Lower) (LPE3510)
33	964234	Bearing Ass'y (2)
34	964235	Electrical Bracket
35	964236	Fixing Plate
36	964237	Upper Chamber Support Plate (Left)
37A	964238	Chamber (Upper) (LPE6510)





Exploded Views Drawing #	Order Code	<b>LPE6510 (25") and LPE3510 (13") Parts. Be sure to check the serial number of the machine being repaired.</b>
37A	963235	Chamber (Upper) (LPE3510)
37B	964239	Chamber (Lower) (LPE6510)
37B	963236	Chamber (Lower) (LPE3510)
38	964240	Upper Chamber Support Plate (Right)
39	964241	Heater Roller (Upper) (LPE6510)
39	963238	Heater Roller (Upper) (LPE3510)
40	964242	Lower Chamber Support Plate (Left)
41	964243	Lower Chamber Support Plate (Right)
42	964244	Heater Roller (Lower) (LPE6510)
42	963243	Heater Roller (Lower) (LPE3510)
43A	964245	Casing (Left)
44	964247	Movable Plate (Lower) (LPE6510: Prior to S/N 6001119; LPE3510)
44	964277	Movable Plate (Lower) (LPE6510: After S/N 6001119)
45	964248	Pull Roller Spring (LPE6510: Prior to S/N 6001119; LPE3510)
45	964278	Pull Roller Spring (LPE6510: After S/N 6001119)
46	964249	Heater Roller Spring (LPE6510: Prior to S/N 6001119; LPE3510)
46	964279	Heater Roller Spring (LPE6510: After S/N 6001119)
47	964250	Movable Plate (Upper)
48	964251	Code Bush (Small)
49	964252	Code Bush (Large)
50	964253	Rubber Foot
51	964254	Side Plate (Left)
52	964255	Nut Press Spring
53	964256	Support Pin
54	964257	Front Guide Plate Pin
55	964258	Fixing Clip (Middle)
56	964259	Fixing Clip (Small)
57	964260	Side Plate (Right)
58A	964261	Casing (Right)
59	964263	Temp Knob
60	964264	Stay (Upper) (LPE6510)
60	963263	Stay (Upper) (LPE3510)
61	964265	Support Plate for Front Guide Plate (Left)
62	964266	Front Guide Plate (LPE6510)
62	963266	Front Guide Plate (LPE3510)
63	964267	Press Nut For Paper Guide (Short)
64	964268	Paper Guide
65	964269	Paper Guide Nut
66	964270	Press Nut For Paper Guide (Long)
67	964271	Support Plate for Front Guide Plate (Right)
68A	996223	DC Motor (UL) (LPE3510)
68A	996201	DC Motor (UL) (LPE6510)
69A	964272	Mica Heater (Upper or Lower) (UL) (LPE6510)
69A	964273	DISCONTINUED- Use 964272
69A	963272	Mica Heater (Upper or Lower) (UL) (LPE3510)
70A	996203	Motor Capacitor (UL)
71	996205	Fuse Holder
72	996139	Control PCB
73A	996206	Transformer (UL)
74A	996208	Tube Fuse (15A) (LPE6510)
74A	996229	Tube Fuse (7A) (LPE3510)
75A	996210	Tube Fuse (1A)



Exploded Views Drawing #	Order Code	<b>LPE6510 (25") and LPE3510 (13") Parts. Be sure to check the serial number of the machine being repaired.</b>
76A	996212	Noise Filter ESI-T20
77	996214	Thermistor Sensor (PT100) (Same as 996200 except longer wire)
78A	996215	DISCONTINUED- Use 996323 (Temperature Fuse Ass'y SPF182-15A for LPE6510: Prior to S/N 6001119)
78A	996323	Temperature Fuse Ass'y SPF188-15A (All Models)
79A	996217	Power Cord
80	996219	Bushing
81	996140	LED PCB
82	996220	Temperature Volume
83	996221	Power Switch (UL)
84	996222	Motor Switch (UL)
85	995407	Pan Head Screw M4x8
86	995408	Spring Washer M4
87	995409	Flat Washer M4
88	995410	Pan Head Screw with set M4x8
89	995501	Hexagonal Bolt M5x14
90	995502	Spring Washer M5
91	995503	Flat Washer M5
92	995411	Pan Head Screw M4x12
93	995003	Retaining Ring C Type 12
94	995412	Key C4x8
95	995413	Flat Washer (Large) M4
96	995004	Handle Cover
97	995307	Pan Head Tapping Screw ST3.5x13
99	995604	Flat Washer M6
101	995414	Key C4x14
102	995415	Hexagonal Bolt M4x10
103	995505	Hexagonal Nut M5
104	995005	Retaining Ring C Type 22
105	995416	Pan Head Screw M4x10
106	995006	Rear Tray Hook
107	995308	Flat Washer M3
109	995310	Spring Washer M3
111	995605	Retaining Ring C Type 6
112	995311	Flat Head Tapping Screw ST3.5x13
114	995510	Key C5x14
115	995312	Pan Head Tapping Screw M3x6
117	995417	Chain O4H
118	995511	Press Bolt M5x50
119	995418	Flat Head Screw M4x8
120	995419	Hexagonal Nut M5
121	995512	Pan Head Screw M5x20
122	995313	Pan Head Screw M3x8
124	995420	Flat Head Screw M4x10
125	995314	Pan Head Tapping Screw ST3x12 (LPE6510: Prior to S/N 6001119)
126	995316	Hexagonal Nut M3
127	964276	Safety Cover Pin (LPE6510: After S/N 6001119, not used on LPE3510)
128	964282	Temperature Fuse Safety Cover (LPE6510: After S/N 6001119; not used on LPE3510)
129	963279	Mandrel Clip