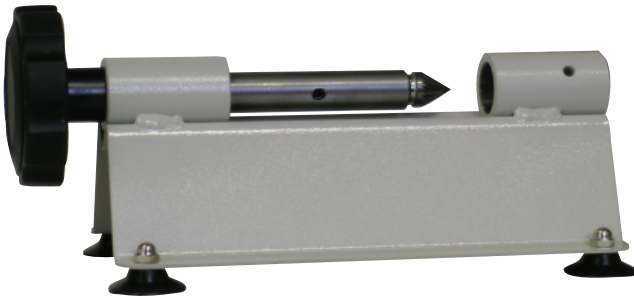


# MS-1 Precision Drill Sharpener

## OPERATING INSTRUCTIONS



- Mount the MS-1 drill sharpener either using the four Sucker Feet and 8-32 Accorn Nuts provided or mount/screw to a surface as desired.
- Insert the hollow drill bit into the Holding Chuck and turn the Operating Wheel with light pressure two to three times for an evenly beveled, razor sharp edge.

