

Parts Manual

Version A 10/2013

Letter Openers

3056 / 3063 / 3066 / 3068 / 3078

Model 3056 (serial numbers last six digits 560200 or higher)

Assembly	Page 2-3
Roller Assembly	Page 13
Separator	Page 13
Transport Bar	Page 14
Feed Belts	Page 14
Receiving Tray	Page 17

Model 3063 (serial numbers last six digits 630200 or higher)

Assembly	Page 18-19
Track Cover	Page 20
LM1 Counter	Page 6
Feed Belts	Page 16
Transport Bar	Page 16
Receiving Tray	Page 17
Cart and Waste Bin	Page 17

Model 3066 (serial numbers last six digits 660100 or higher)

Assembly	Page 4-5
Roller Assembly	Page 13
Separator	Page 13
LM1 Counter	Page 6
Feed Belts	Page 15
Transport Bar	Page 15
Receiving Tray	Page 17
Cart and Waste Bin	Page 17

Model 3068 (serial numbers last six digits 680200 - 680299)

Assembly	Page 21-22
Print System.....	Page 9
Roller Assembly	Page 13
Separator	Page 13
Transport Bar	Page 14
Feed Belts	Page 14
Receiving Tray	Page 17
Cart and Waste Bin	Page 17

Model 3068 (serial numbers last six digits 680300 or higher)

Assembly	Page 7-8
Print System.....	Page 9
Roller Assembly	Page 13
Separator	Page 13
Transport Bar	Page 14
Feed Belts	Page 14
Receiving Tray	Page 17
Cart and Waste Bin	Page 17

Model 3078 (serial numbers last six digits 780000 or higher)

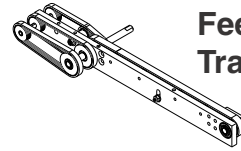
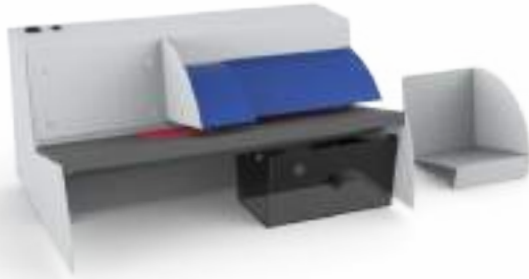
Assembly	Page 10-12
Conveyor	Page 12
Roller Assembly	Page 13
Separator	Page 13
Transport Bar	Page 15
Feed Belts	Page 15
Cart and Waste Bin	Page 17

MODEL 3056 LETTER OPENER

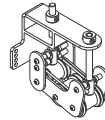
Spare parts

Serial Number last 6 digits above
560200

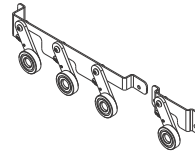
Example: PM2560251



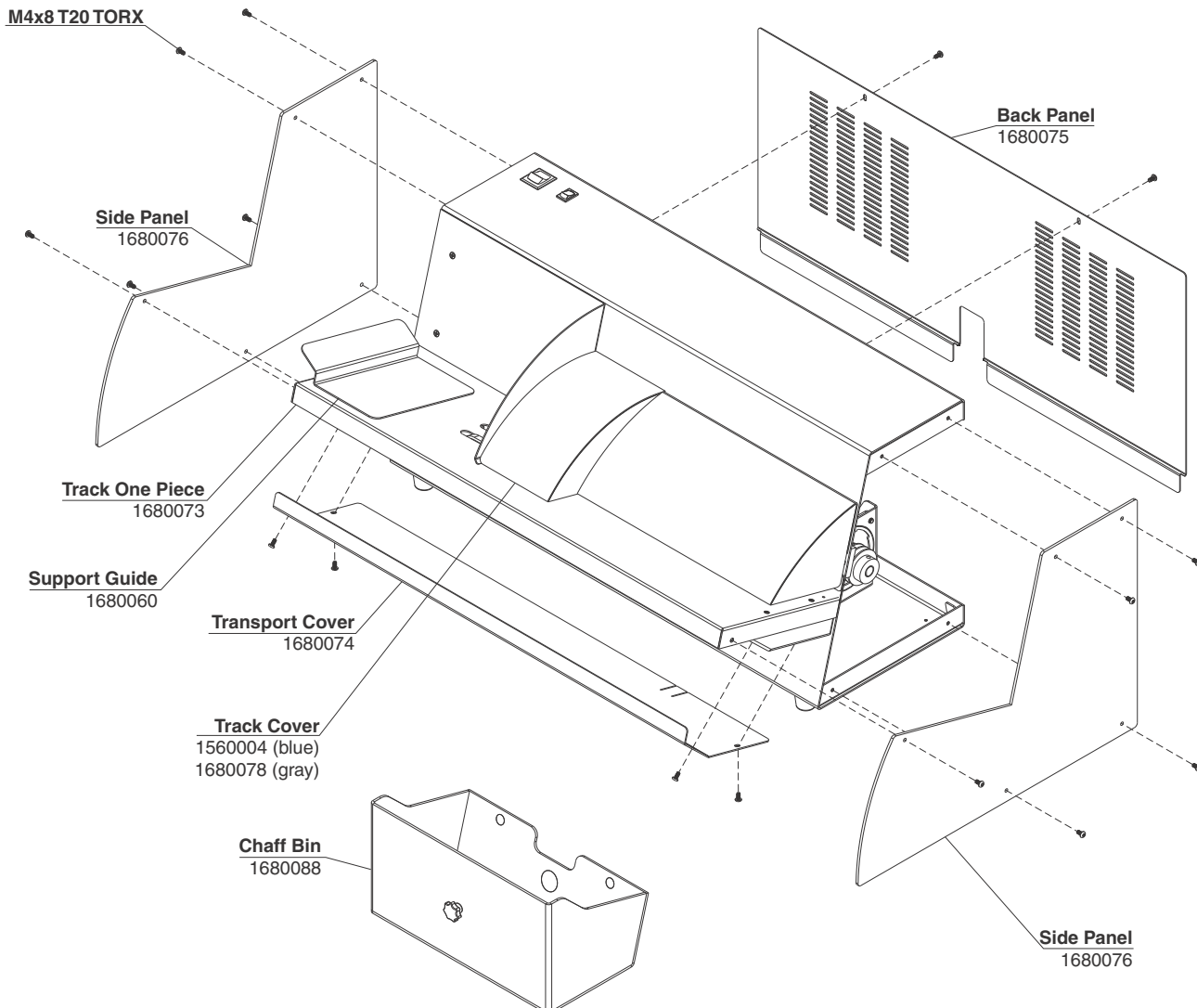
**Feed Belts &
Transport Bar - Page 14**



**Mixed Thickness
Separator Assembly- Page 13**

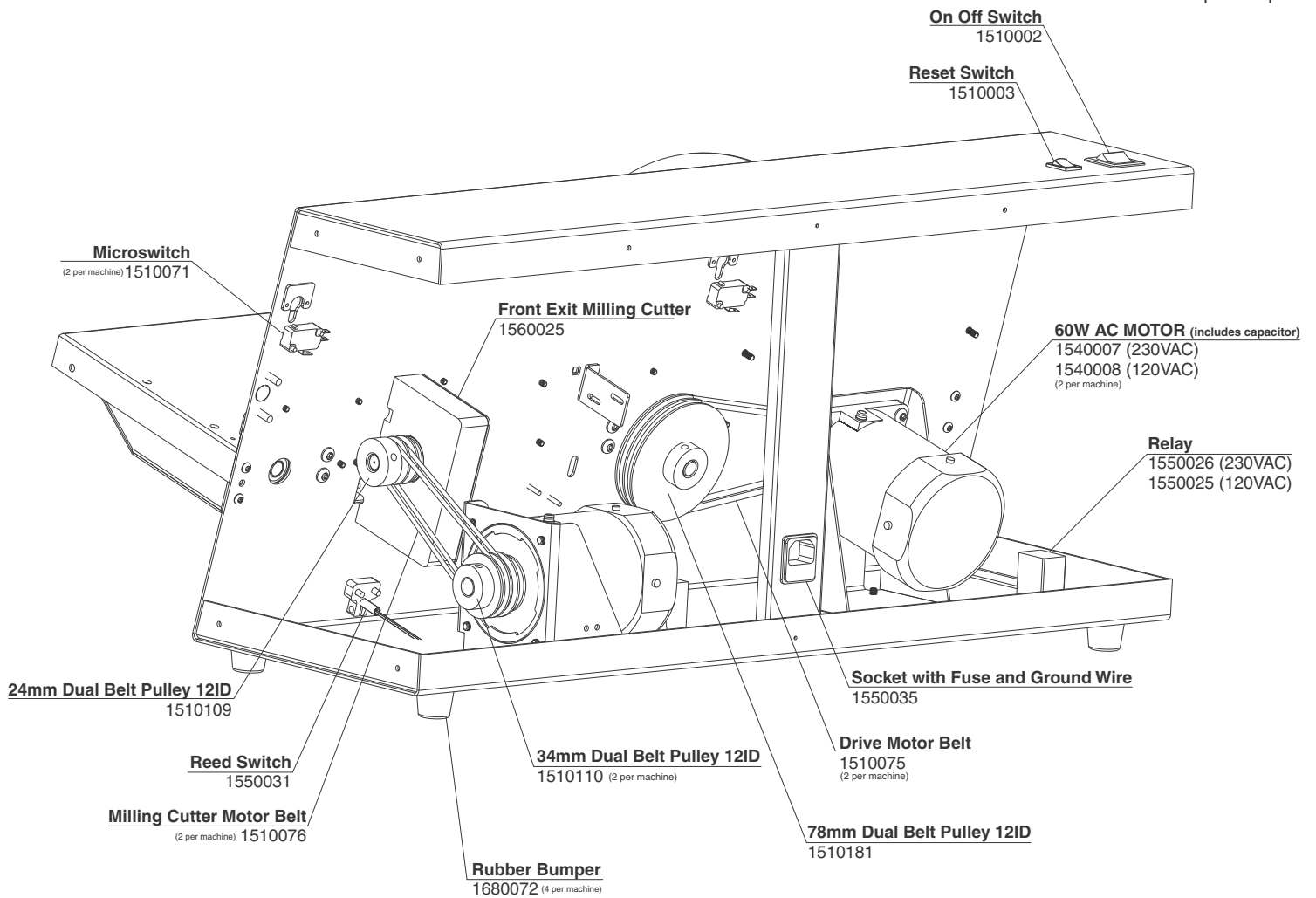


Roller Assembly - Page 13

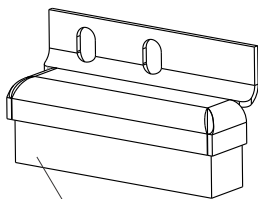


MODEL 3056 LETTER OPENER

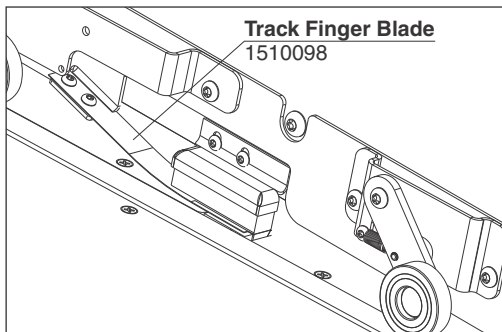
Spare parts



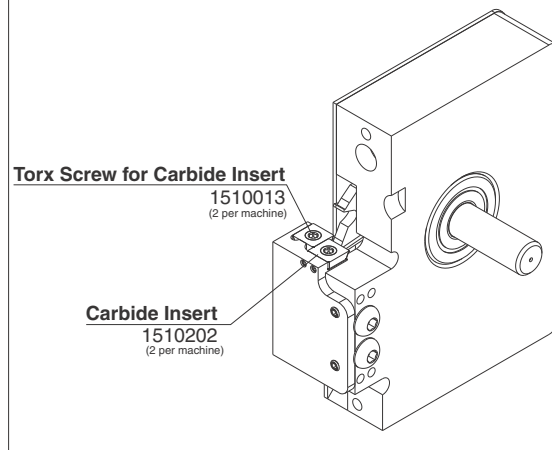
Foam Holder with Foam 1510065



Foam Replacement Block 1510066



Front Exit Milling Cutter Assembly 1560025



Resettable Counter Kit

1680109

Resettable Counter kit includes all components to field install a resettable counter.

Includes:

Fiber Optic Photosensor M8 Plug - 1680042

M3 Diffuse Fiber - 1680070

Resettable Counter - 1510102

15W - 12V Power Supply - 1680069

Voltage Convert Mod 4-50VAC/DC - 1680086

Also included - all wiring needed for field installation

Fiber Optic Photosensor M8 Plug

1680042



M3 Diffuse Fiber

1680070



Resettable Counter

1510102



15W - 12V Power Supply

1680069



Voltage Convert Mod 4-50VAC/DC

1680086



Fiber Optic Photosensor Pigtail

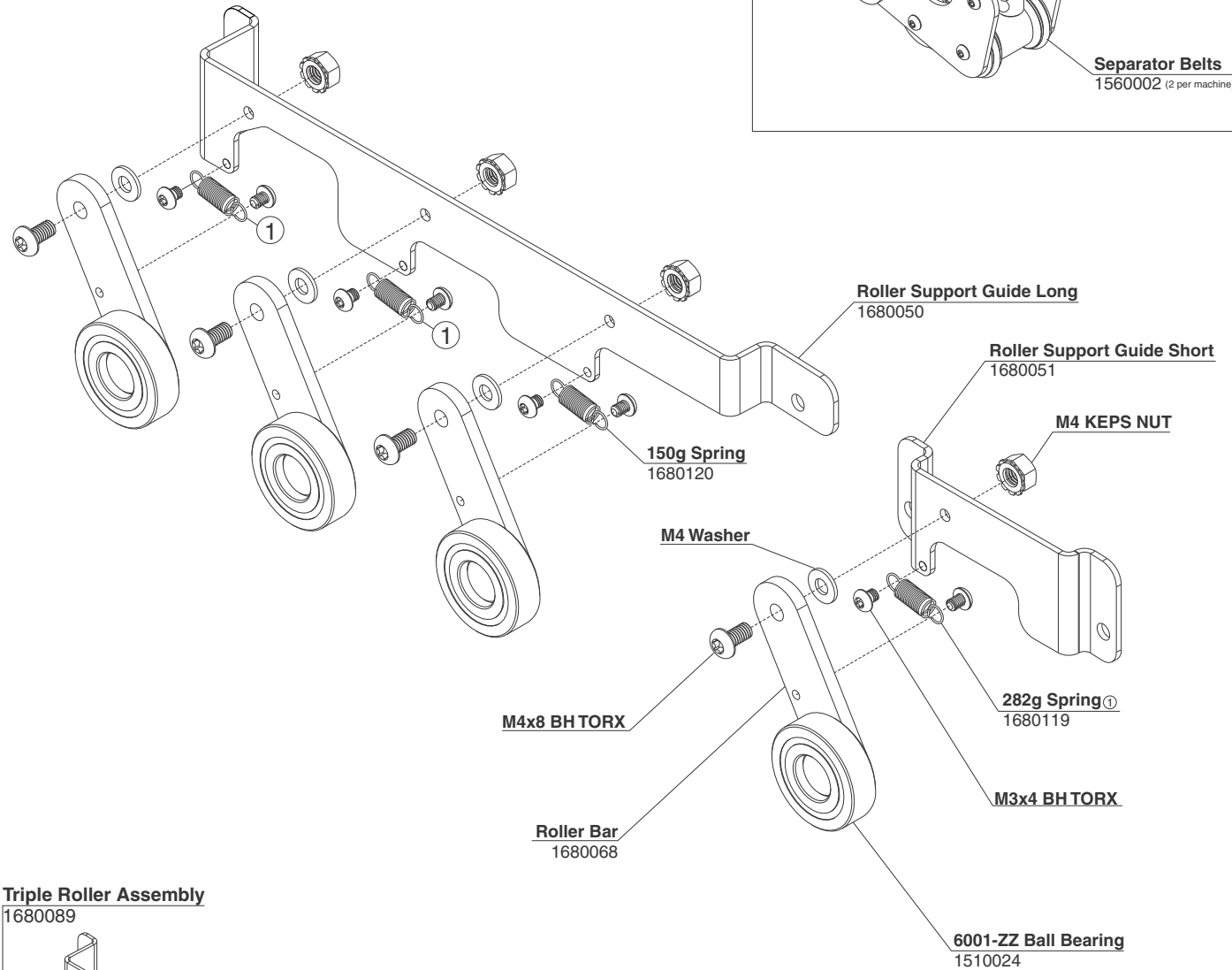
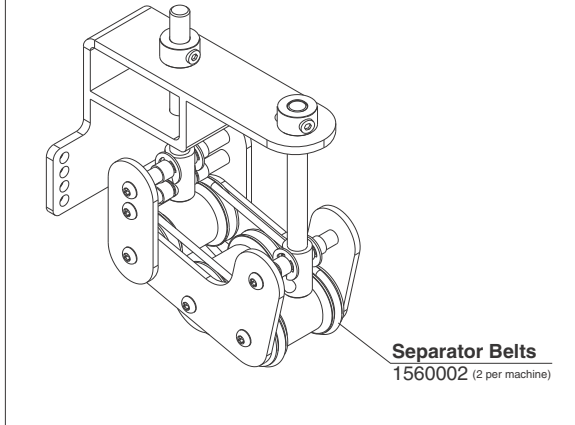
1510082A



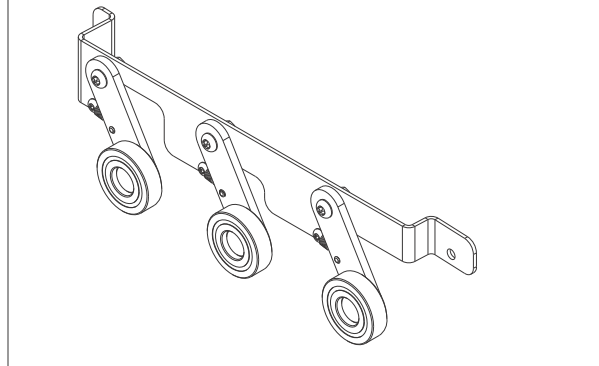
ROLLER ASSEMBLY AND SEPARATOR

For Model 3056, 3066, 3068, and 3078

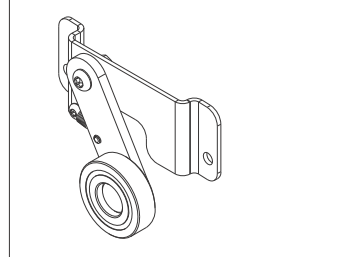
Mixed Thickness Separator Assembly
1560001



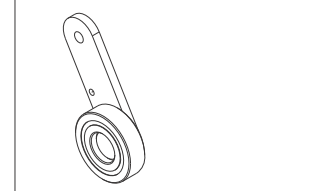
Triple Roller Assembly
1680089



Single Roller Assembly
1680090



Roller Bar with Bearing
1680091

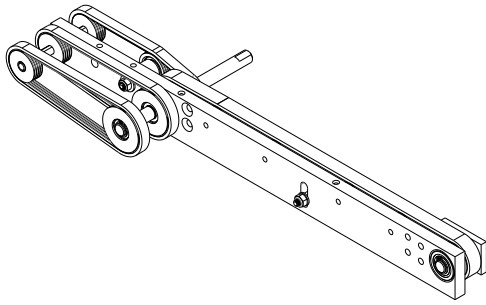


FEED DRIVE POLY V TRANSPORT BAR

For Model 3056 and 3068

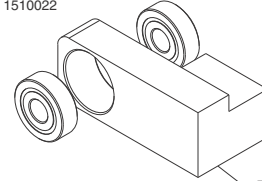
Feed Drive Poly V Transport Bar

1680065



Transport Bar Support Bracket

608-ZZ Ball Bearing
1510022



Transport Bar Support Bracket
1680118

