

Parts Manual

Version A 10/2013

Letter Openers

3056 / 3063 / 3066 / 3068 / 3078

Model 3056 (serial numbers last six digits 560200 or higher)

Assembly	Page 2-3
Roller Assembly	Page 13
Separator	Page 13
Transport Bar	Page 14
Feed Belts	Page 14
Receiving Tray	Page 17

Model 3063 (serial numbers last six digits 630200 or higher)

Assembly	Page 18-19
Track Cover	Page 20
LM1 Counter	Page 6
Feed Belts	Page 16
Transport Bar	Page 16
Receiving Tray	Page 17
Cart and Waste Bin	Page 17

Model 3066 (serial numbers last six digits 660100 or higher)

Assembly	Page 4-5
Roller Assembly	Page 13
Separator	Page 13
LM1 Counter	Page 6
Feed Belts	Page 15
Transport Bar	Page 15
Receiving Tray	Page 17
Cart and Waste Bin	Page 17

Model 3068 (serial numbers last six digits 680200 - 680299)

Assembly	Page 21-22
Print System.....	Page 9
Roller Assembly	Page 13
Separator	Page 13
Transport Bar	Page 14
Feed Belts	Page 14
Receiving Tray	Page 17
Cart and Waste Bin	Page 17

Model 3068 (serial numbers last six digits 680300 or higher)

Assembly	Page 7-8
Print System.....	Page 9
Roller Assembly	Page 13
Separator	Page 13
Transport Bar	Page 14
Feed Belts	Page 14
Receiving Tray	Page 17
Cart and Waste Bin	Page 17

Model 3078 (serial numbers last six digits 780000 or higher)

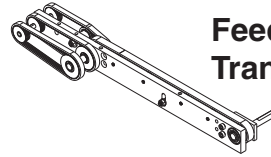
Assembly	Page 10-12
Conveyor	Page 12
Roller Assembly	Page 13
Separator	Page 13
Transport Bar	Page 15
Feed Belts	Page 15
Cart and Waste Bin	Page 17

MODEL 3078 LETTER OPENER

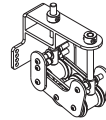
Spare parts

Serial Number last 6 digits above
780000

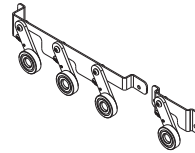
Example: PM1780051



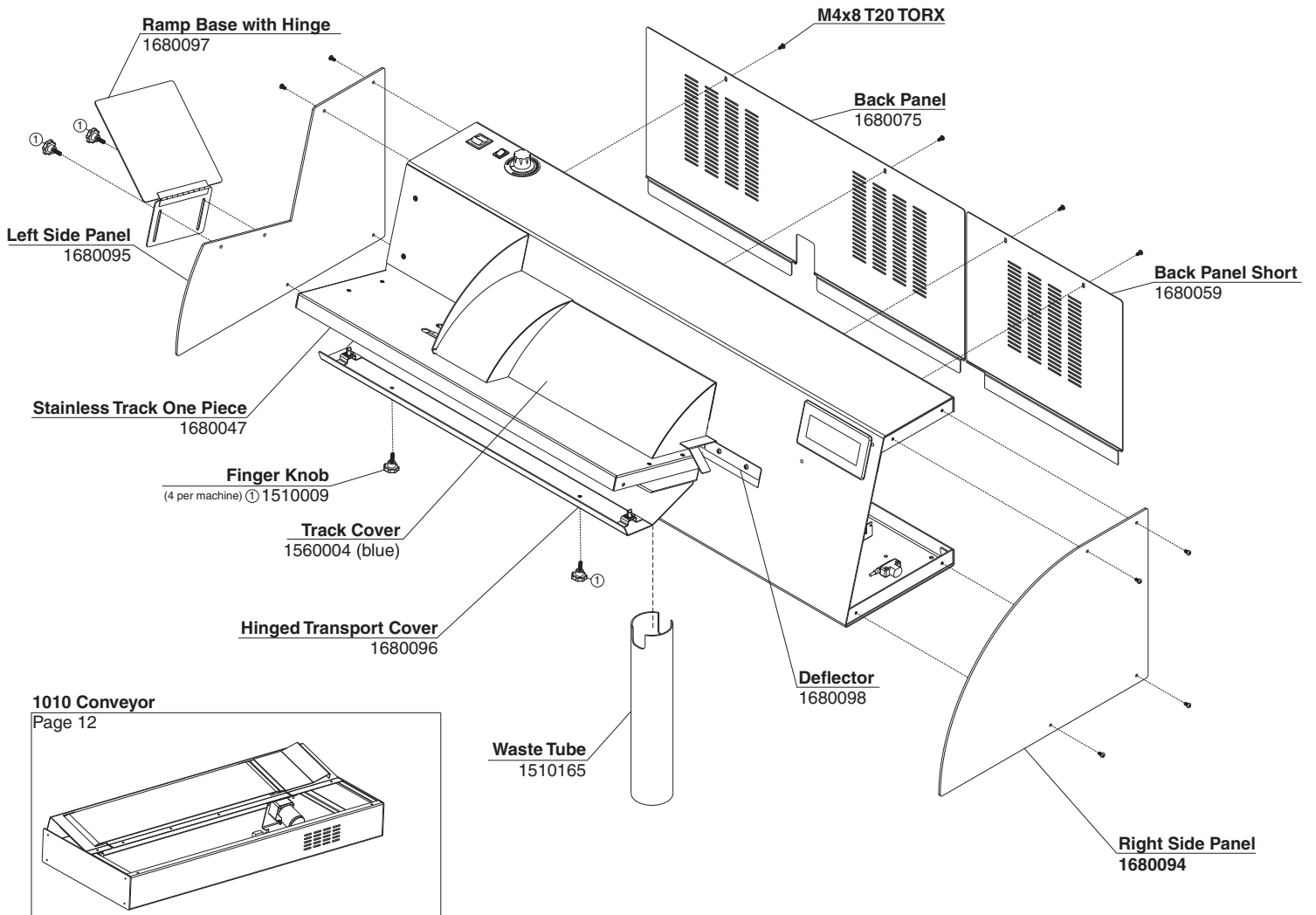
**Feed Belts &
Transport Bar - Page 15**



**Mixed Thickness
Separator Assembly- Page 13**



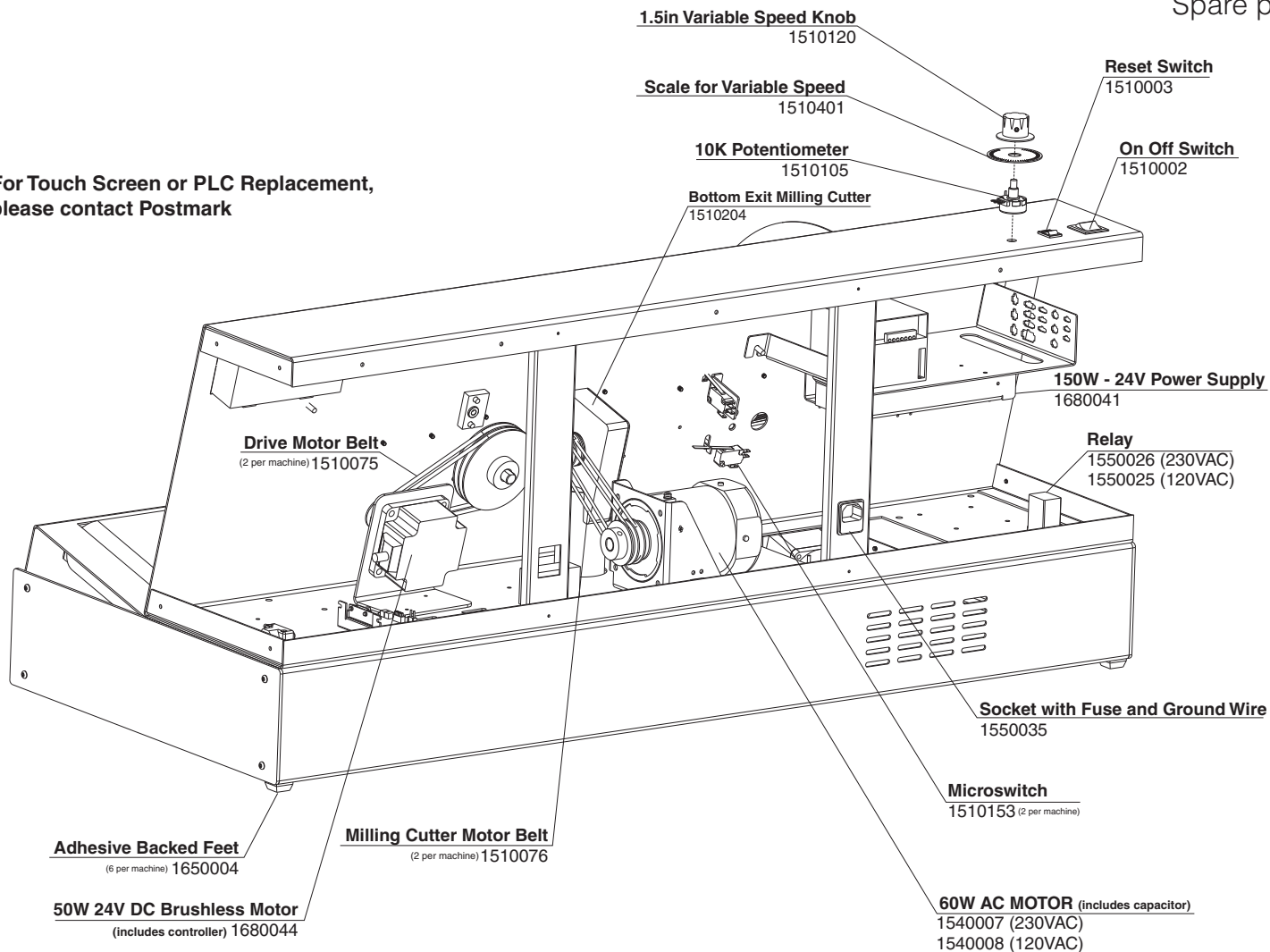
Roller Assembly - Page 13



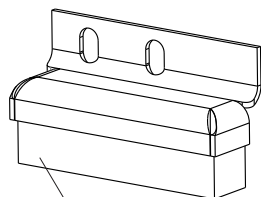
MODEL 3078 LETTER OPENER

Spare parts

For Touch Screen or PLC Replacement,
please contact Postmark

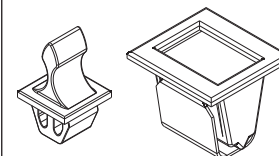


Foam Holder with Foam
1510065



Foam Replacement Block
1510066

Strike and Latch (set)
1510010



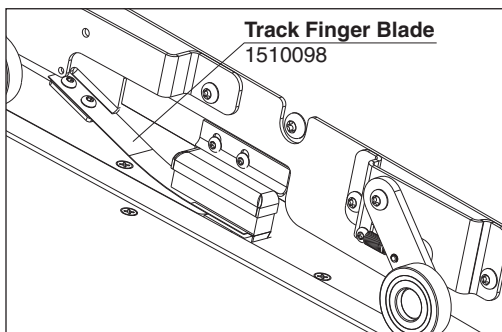
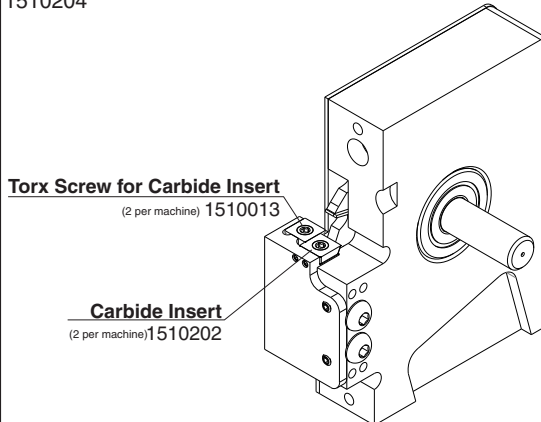
Fiber Optic Photosensor M8 Plug
1680042



M3 Diffuse Fiber
1680070

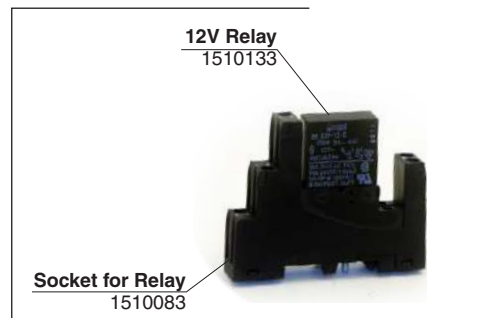
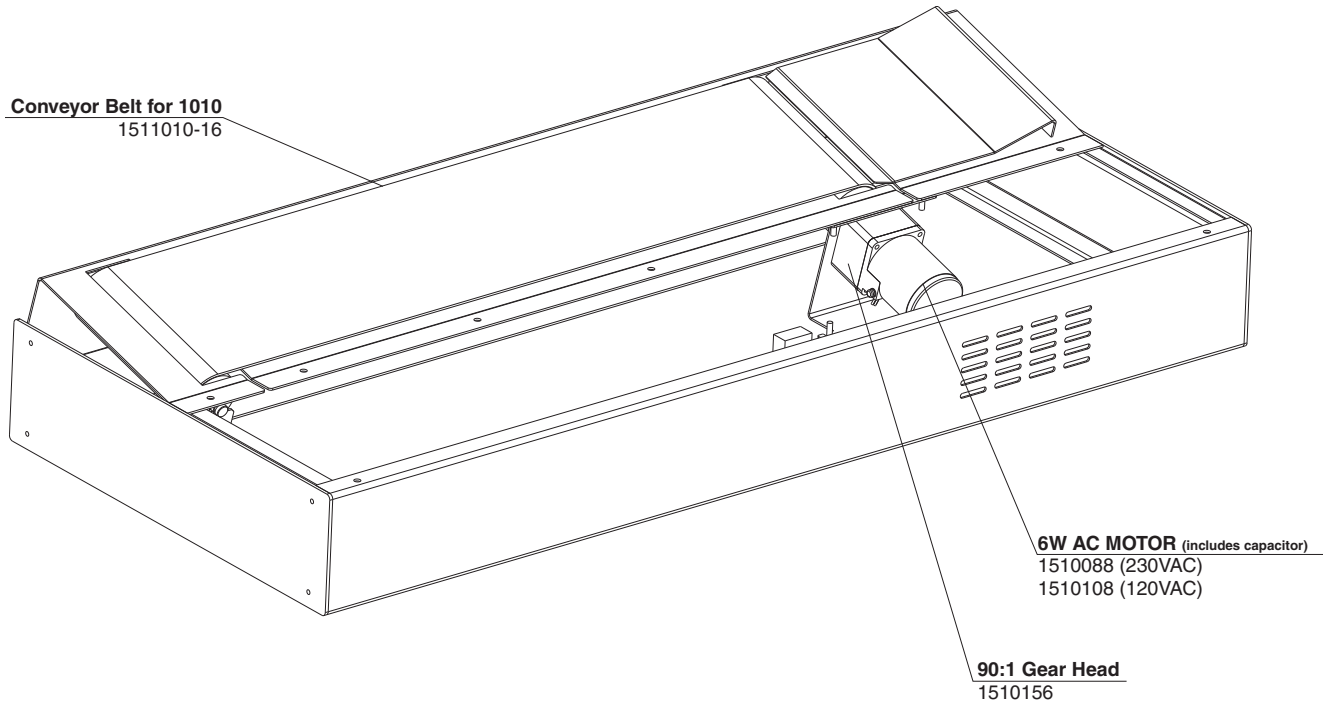


Bottom Exit Milling Cutter Assembly
1510204



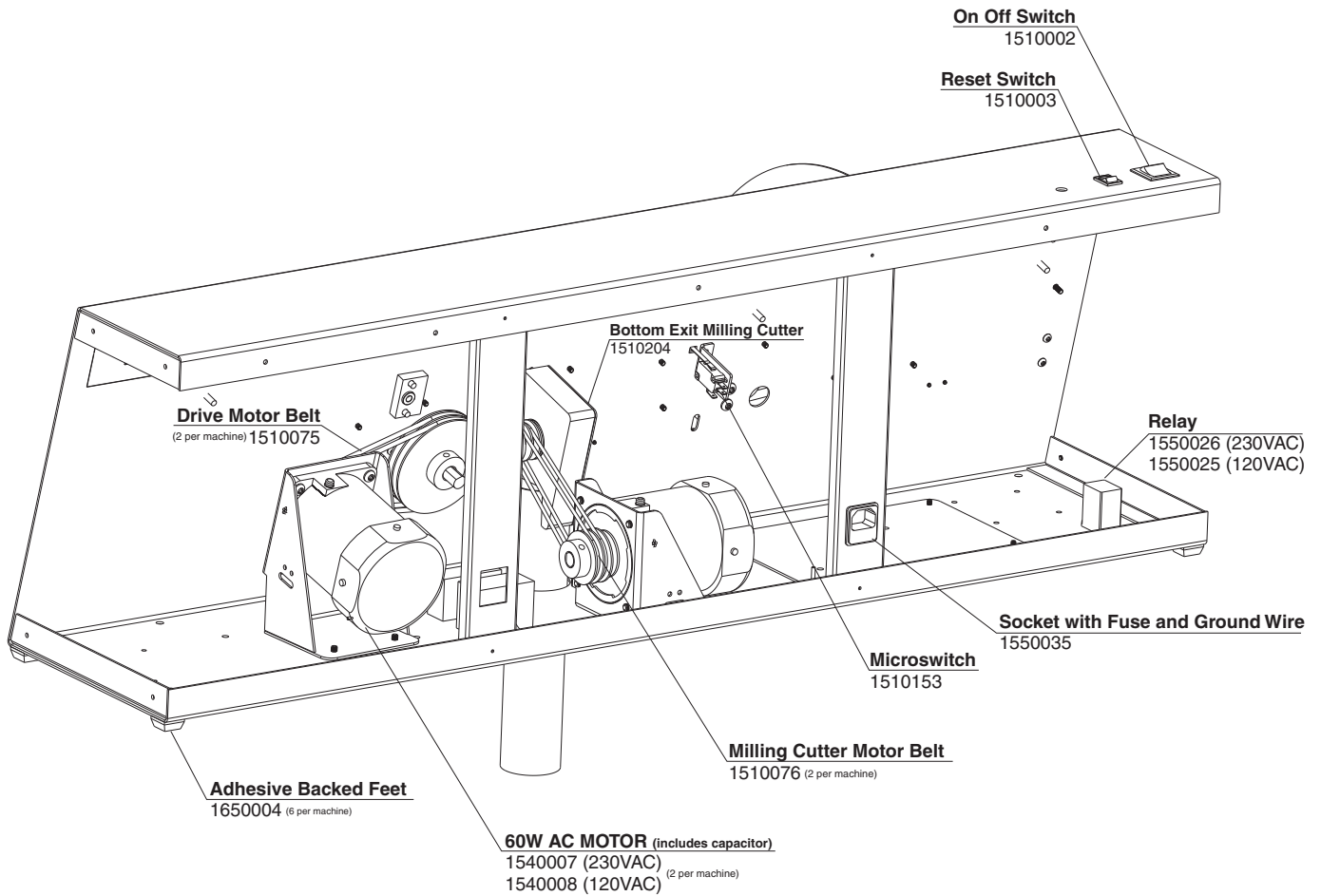
MODEL 3078 LETTER OPENER

Spare parts

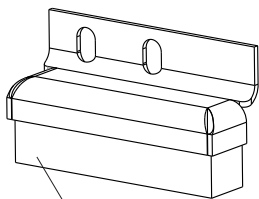


MODEL 3066 LETTER OPENER

Spare parts

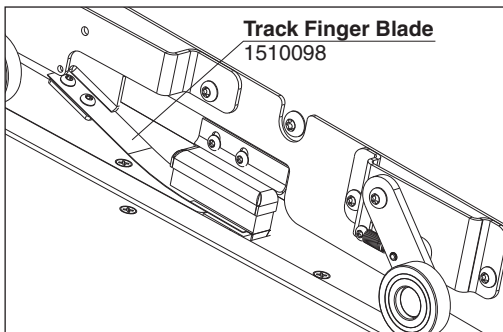
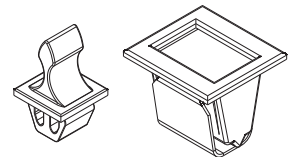


Foam Holder with Foam
1510065



Foam Replacement Block
1510066

Strike and Latch (set)
1510010

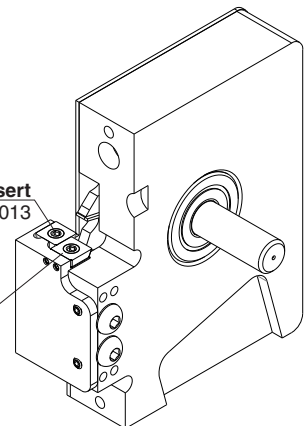


Track Finger Blade
1510098

Bottom Exit Milling Cutter Assembly
1510204

Torx Screw for Carbide Insert
(2 per machine) 1510013

Carbide Insert
(2 per machine) 1510202



Resettable Counter Kit

1680109

Resettable Counter kit includes all components to field install a resettable counter.

Includes:

Fiber Optic Photosensor M8 Plug - 1680042

M3 Diffuse Fiber - 1680070

Resettable Counter - 1510102

15W - 12V Power Supply - 1680069

Voltage Convert Mod 4-50VAC/DC - 1680086

Also included - all wiring needed for field installation

Fiber Optic Photosensor M8 Plug

1680042



M3 Diffuse Fiber

1680070



Resettable Counter

1510102



15W - 12V Power Supply

1680069



Voltage Convert Mod 4-50VAC/DC

1680086



Fiber Optic Photosensor Pigtail

1510082A

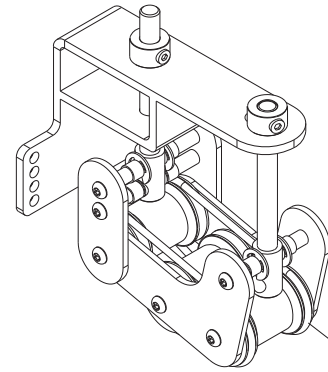


ROLLER ASSEMBLY AND SEPARATOR

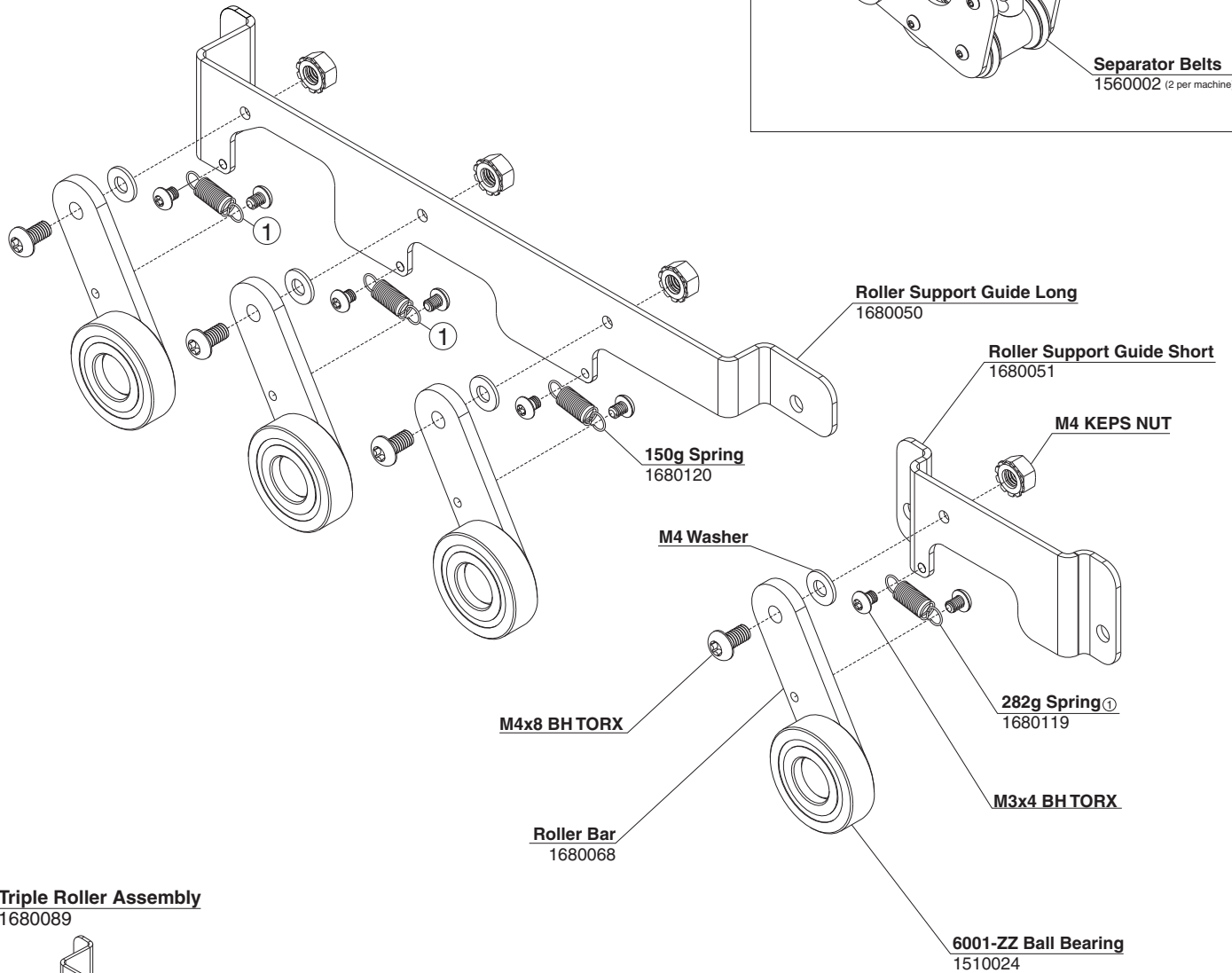
For Model 3056, 3066, 3068, and 3078

Mixed Thickness Separator Assembly

1560001

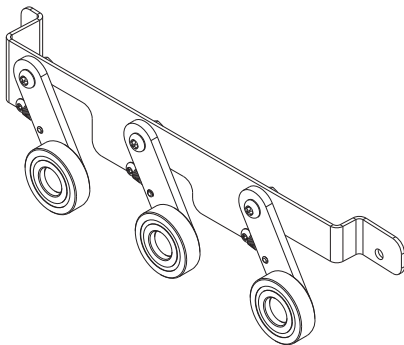


Separator Belts
1560002 (2 per machine)



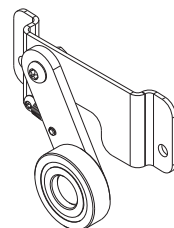
Triple Roller Assembly

1680089



Single Roller Assembly

1680090



Roller Bar with Bearing

1680091

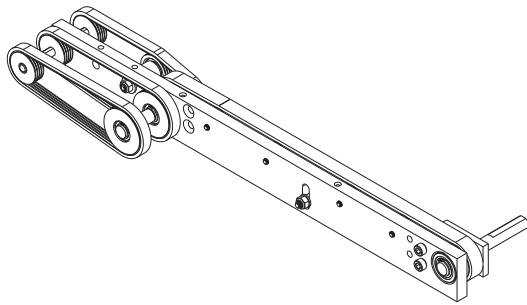


EXIT DRIVE POLY V TRANSPORT BAR

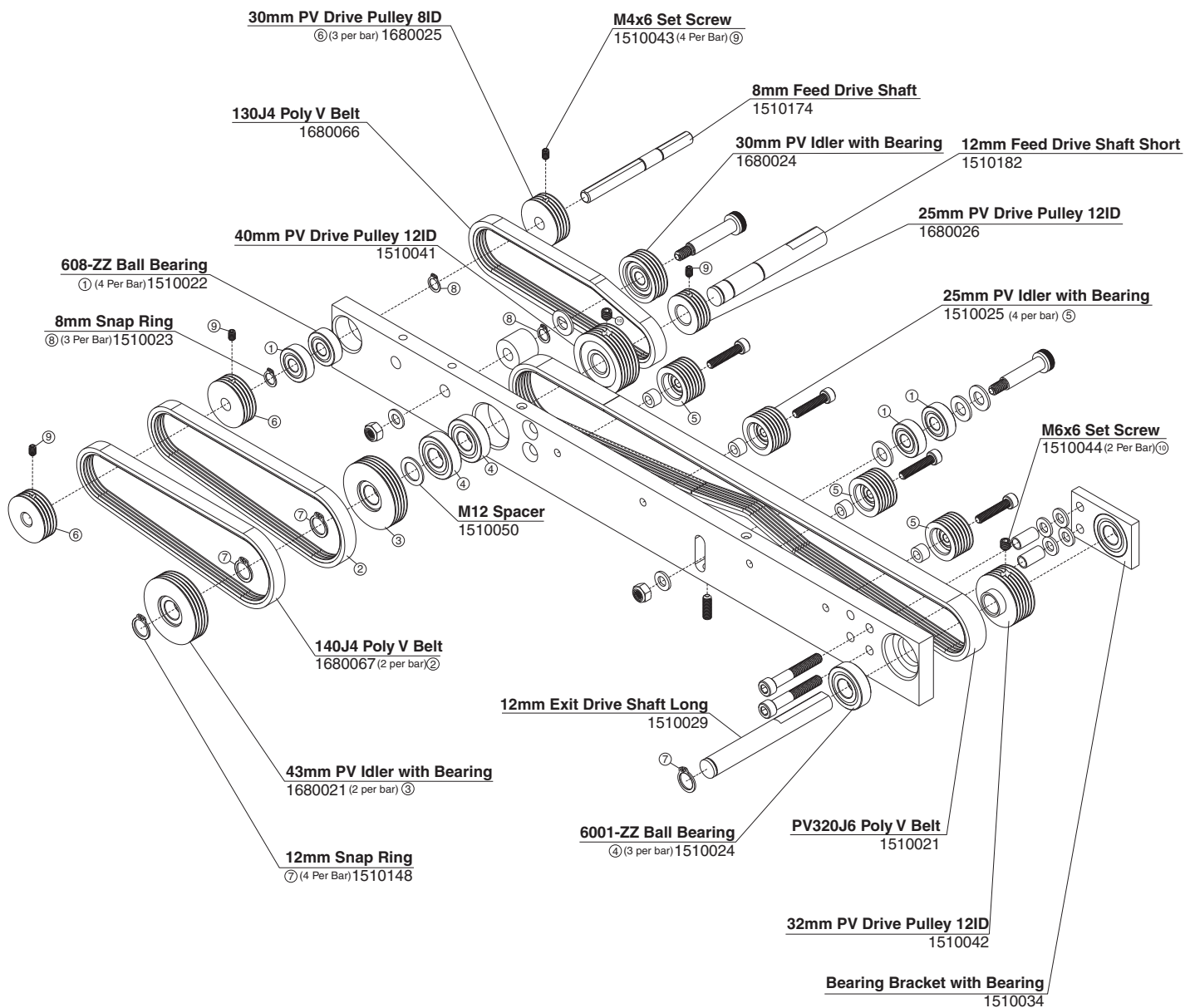
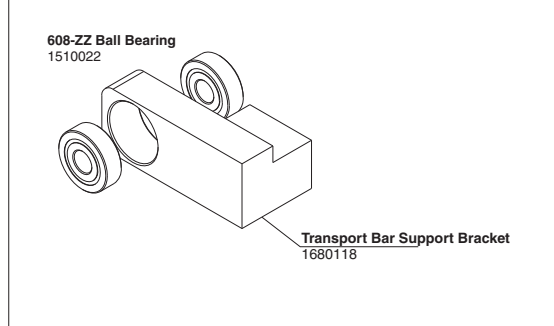
For Model 3066 & 3078

Exit Drive Poly V Transport Bar

1680092

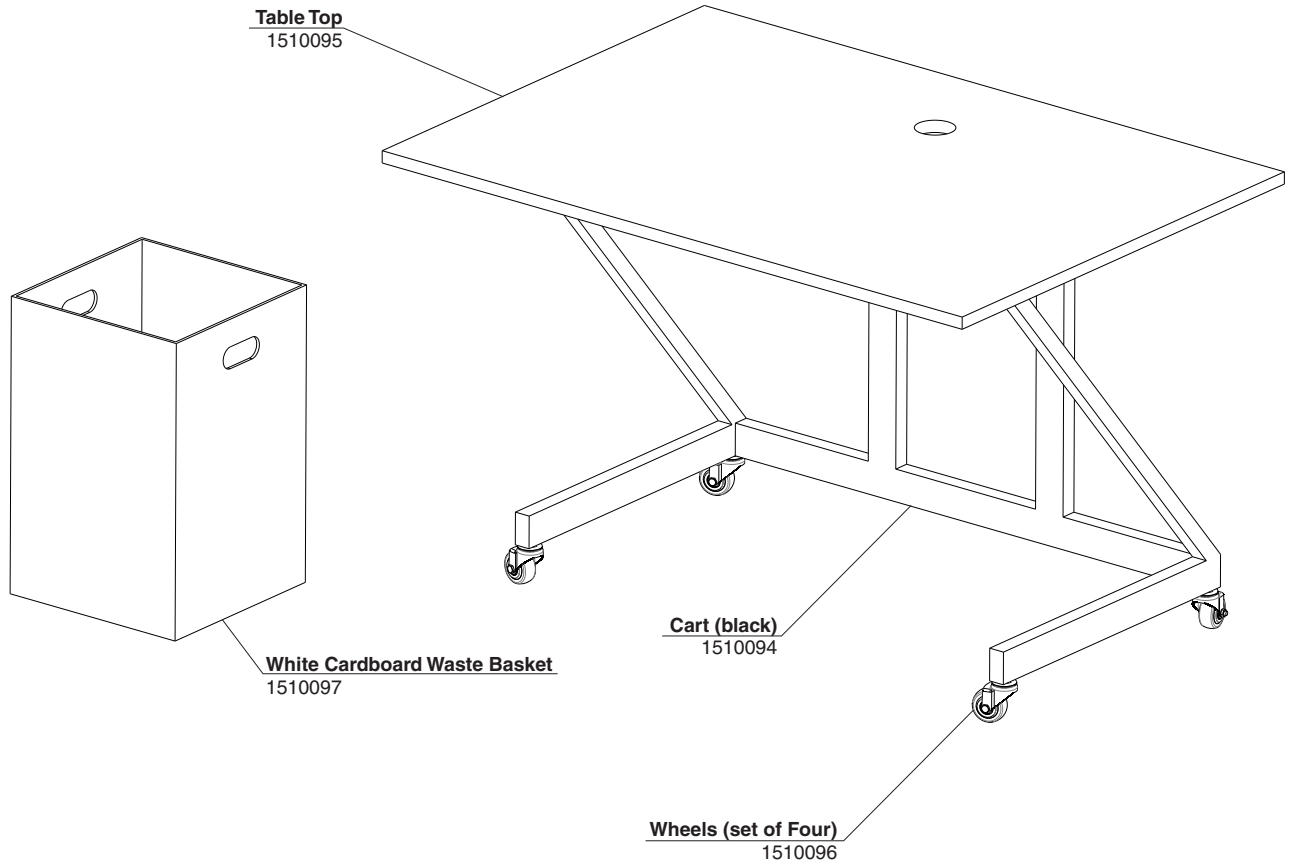


Transport Bar Support Bracket



CART AND WASTE BIN

For Model 3063, 3066, 3068, and 3078



RECEIVING TRAYS

For Model 3056, 3063, 3066 and 3068

