

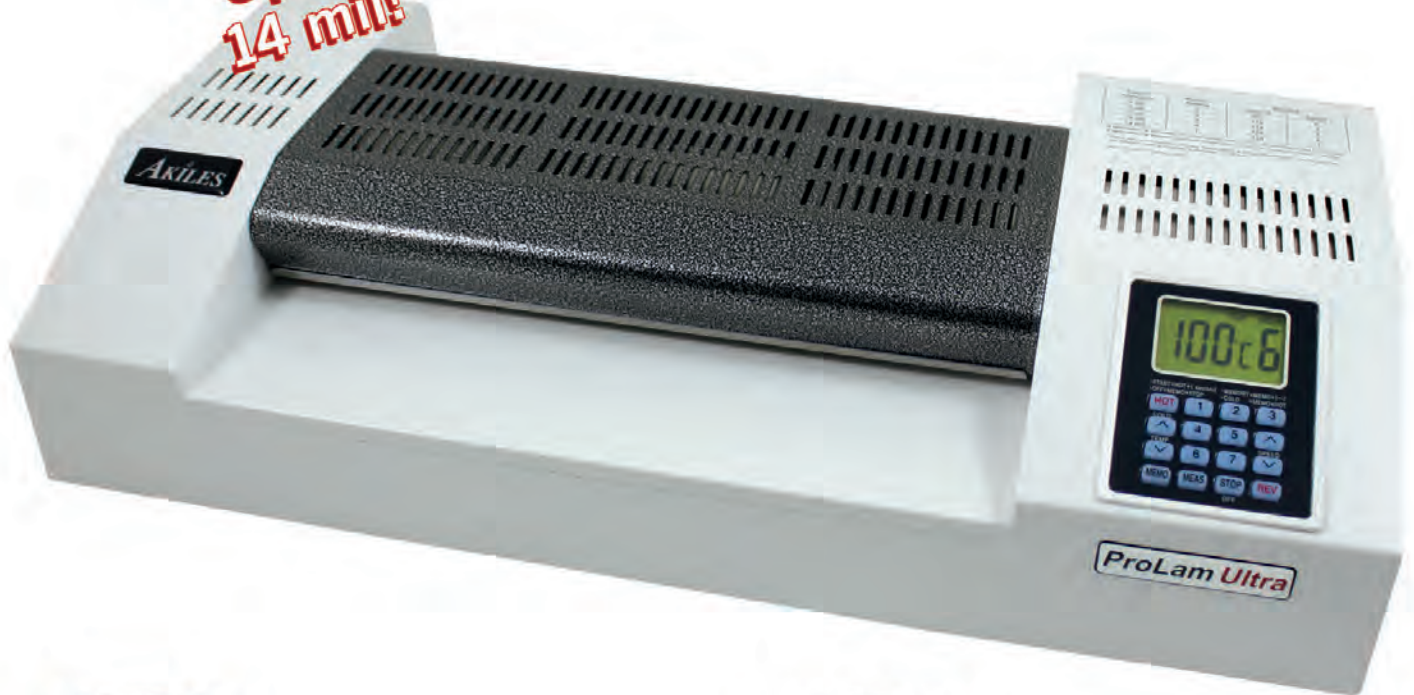


# ProLamUltra

[PROFESSIONAL 6 ROLLER PHOTO LAMINATOR]

## Heavy-Duty 6 Roller Photo Laminator with Patented Cooling System

Laminates  
Up To  
14 mil!



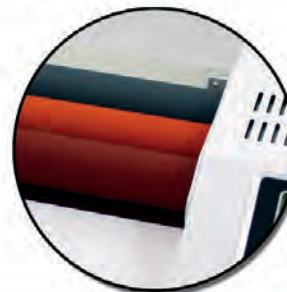
**Air Cooling System**  
Patented internal cooling system makes the laminator cool to the touch while in use.



**User Friendly Control Panel**  
Large LCD display with many features & memory settings make it a very easy-to-use laminator.



**Auto Shutoff**  
Automatically cools and shuts down the machine after usage, to prolong the life of your laminator.



**6 Roller System**  
4 heated and 2 cold rollers create a professional, crystal-clear, and bubble-free laminating result.

# AKILES ProLamUltra [PROFESSIONAL 6 ROLLER LAMINATOR]

The Akiles ProLam Ultra possesses superior quality and functionality combined with commercial grade design. Its 6 Roller Heat System produces professional, crystal-clear and bubble-free pouches every time.

**Removeable Cover**

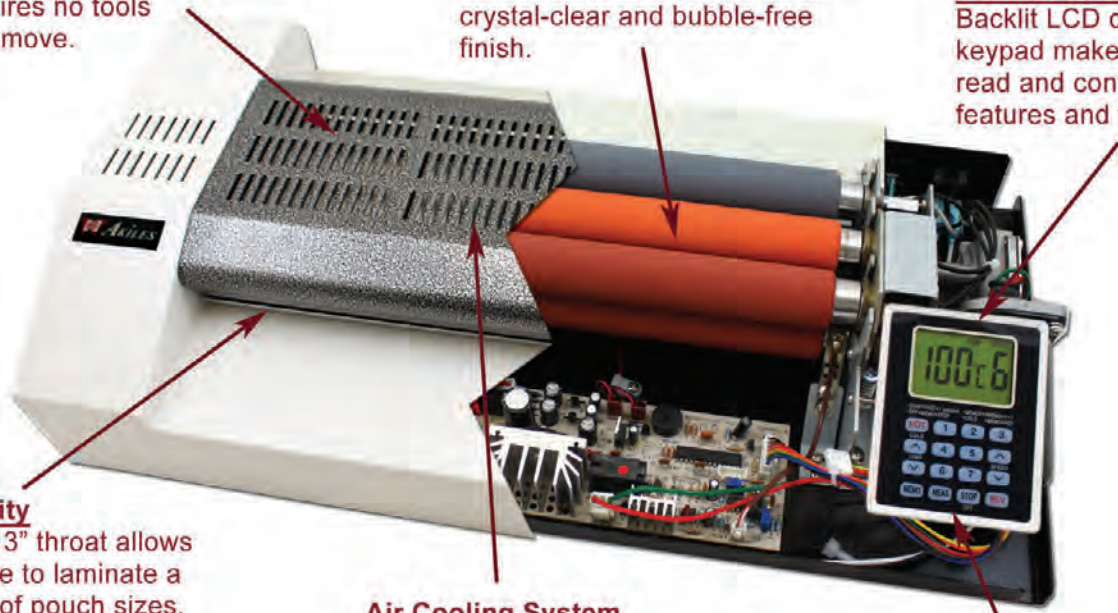
Easy to remove cover allows direct access to the rollers and requires no tools to remove.

**6 Roller Heat System**

4 heated rollers + 2 cold rollers allow for a professional crystal-clear and bubble-free finish.

**LCD Control Panel**

Backlit LCD display with keypad makes it easy to read and control the many features and functions.



**13" Capacity**

The large 13" throat allows the machine to laminate a wide array of pouch sizes.

**Air Cooling System**

Patented internal cooling system makes sure the laminator stays cool while in use.

**7 Memory Settings**

Preset settings ensure you have the correct temperature and speed for different pouch thicknesses.

## SPECIFICATIONS

Throat Capacity:	13" (330mm)
Max Pouch Thickness:	14 Mil
Laminating Speed:	53" /min
Max Laminating Thickness:	1/8" (3 mm)
Rollers:	6 Silicon Rollers (4 Heat / 2 Cold)
Temperature Control:	Digital Display & Keypad
Speed Control:	9 Settings
Memory Settings:	7 Presets
Reverse Function:	Yes
Weight & Volume:	33 lbs / 1.2 CuFt
Warranty	1 Year

AUTHORIZED DEALER:

